

Shawbury Village Hall

Rear Scenery Setup - READ THIS BEFORE YOU START ANY WORK!

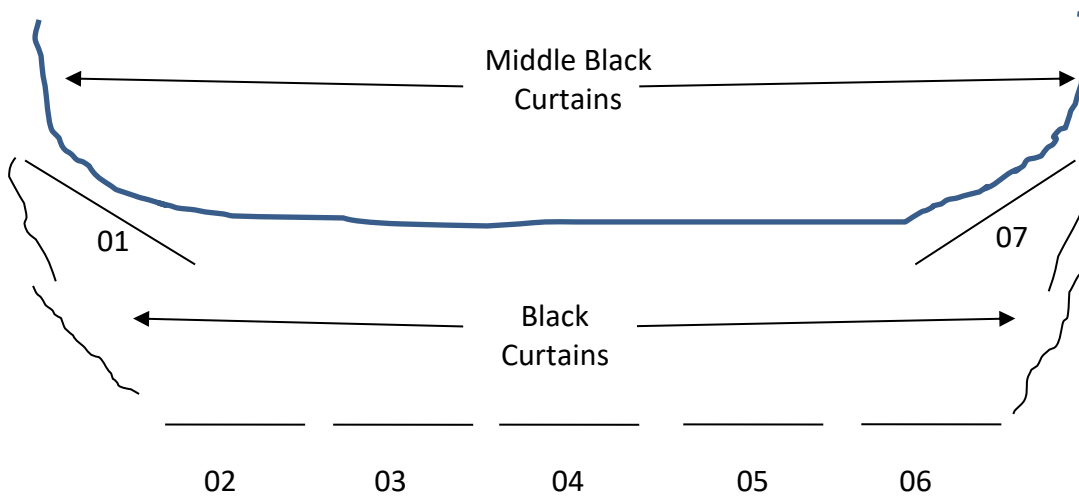
Notes: *The dexion brackets must be used to support the top of the rear flats even if the scenery rolls are not used.*

Do not remove the dexion that supports the rolls to the rear brackets as they are set to hold the rolls level and removal will mean it takes a lot of effort to level the rolls again.

Tools required:

Stepladder, 7/16" spanners, 11mm spanners, 10mm spanners, (better still use a socket spanner as it can be quicker!) posidrive screwdriver. Brass-coloured fixing bolts, in a small marked box.

Scenery panels and black curtains are arranged as shown below:



Very important: Before you start assembling the rear wall, take down the rear scenery rolls that you want to use from the storage brackets located on the rear wall of the village hall stage. It is very hard to do this after our stage rear wall is assembled.

Panels 02 to 06 are bolted to the stage using the bronze bolts. 2 per panel. Do not over tighten them as the bolt threads will be stripped – as has happened to some already. The bolts are not meant to support the panels completely so hold onto the panels until the Dexion brackets are attached and screwed in place.

It is best to start with panel 02 on stage left. Bolt it to the floor then attach the left-hand Dexion bracket to support the panel (see details next paragraph). Next fix 03 to the floor, and bolt the panels together using the silver coach bolts and square or hexagonal nuts in the indicated places. This action also closes the gap between panels. Now attach the next Dexion bracket. Continue to the end of the rear wall.

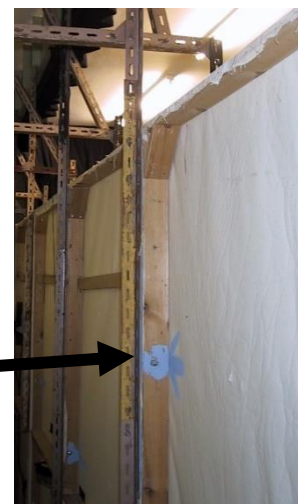
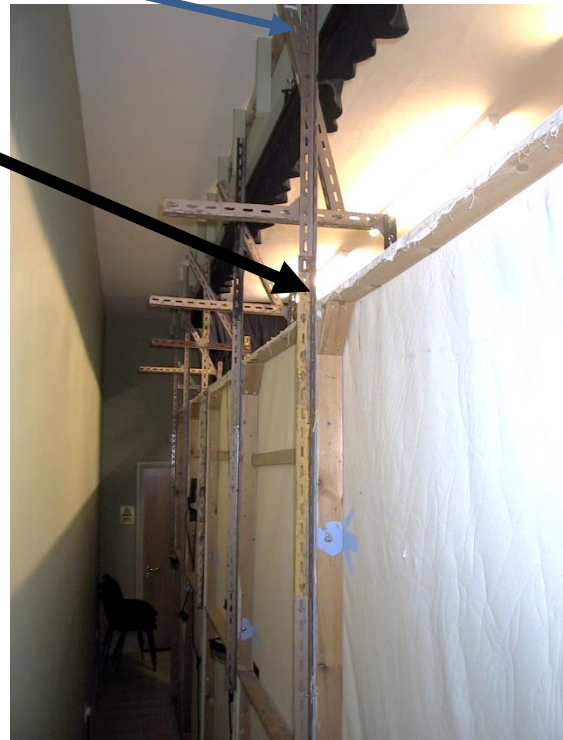


Figure 1 Rear wall in place held by Dexion bracket

The Dexion brackets should be all labelled as to which panel and which side they are attached. Each bracket has a horizontal white line painted on it labelled *edge*. This line should line up with the top of the scenery panel. These lines ensure the canvas scenery roll brackets in the front are all level. The white line above the edge at the top of the bracket is where the wood screw should be attached in to the hall's wood stage/curtain rail at the top. Make sure the vertical Dexion is attached to the canvas flat in at least two places.

Before you attach the wing flats make sure the rear black curtain is split into 4 sections with each side of the stage having two curtains behind the wing flat as shown in the diagram at the top of the previous page.



The wing flats (01 and 07) are not attached directly at the top. Use a metal strip the hold the Dexion at the top to the wood. (The photo here shows an older setup using rope). You cannot screw through the Dexion in to the wood as the panel is held at an angle to preserve some sight lines. The floor bolt at the bottom of each wing panel nearest the centre of the stage does not screw in, it just drops and is designed to be easily removed if you want to rotate the panel (necessary if you use the stage extension to help you attach the canvas rolls as it is a good platform to stand on, or for scene changes where you need to move large items in and out.)



Figure 2 - Side flat Dexion attached to village hall curtain rail

Attaching the canvas rolls

It is easiest to assemble three of the stage extension units and place them in front of the rear canvas flats (allow a gap between the extensions and the rear flats for the rolls to be unrolled down to the floor) as you can then have several people stand on the extension and support the canvas rolls during attachment.

The canvas rolls are only attached after the flats and Dexion brackets are fully assembled. For two different scenes it is best to use the rear wall flats for one scene and and one canvas roll for the other scene. For an additional scene attach another roll to the dexion brackets.



Figure 3 - First roll attached to top of rear wall

The first canvas roll should have a wooden batten at the top but no Dexion attached. The wooden batten is attached using several posidrive 2" screws to the top edge of the canvas flats (see left). Before screwing in the screws make sure the canvas roll is level and correctly aligned left and right at each end of the rear canvas flats.



Figure 4 - Second roll attached to Dexion frame

The second canvas roll should have a wooden batten at the top with Dexion bolted along its full length. The Dexion is attached to the overhanging rear Dexion brackets (of the two hanging vertically) using 7/16" bolts and nuts (see left). Again make sure the canvas roll is correctly aligned at each end of the rear canvas flats.

For three canvas rolls repeat as a second roll using the front of the of the two vertical Dexion brackets.

Finally, using Wood or spare Dexion attach a horizontal full-width bar across the front top edge of the Dexion bracket. This holds the black pelmet curtain away from the rolls otherwise they can get caught up when rolling/unrolling.



Figure 5 - Roll fully down

Important: Each roll should have a short (about 9") Dexion handle at each end that is used to wind the roll up and down. To lock the roll in the *up* position, the handle is placed over a long bolt that is fixed on the end Dexion frames of the rear canvas wall (that is, the frame on the left side of 02 and the frame on the right side of 06). Hold the handle on the bolt by using a wing nut (so it can be undone by hand during scene changes).



Figure 6 - Roll fully up

Scenery rolls should have a foam insulation covering the wood batten at the bottom of the roll. This makes it easier to roll/unroll the scenery and also helps prevent creasing. Don't use pipe insulation as the internal diameter is too small. Scaffold foam protection rolls are ideal as they have a wider internal diameter.

Dismantling the scenery

Do not dismantle the Dexion frames, just undo the wood screws and disconnect them from the rear scenery and village hall. Save all the bolts and screws in the special box, please. That way we should not have to buy more next year. The Dexion frames are stored horizontally across the scaffolding framework on the left as you enter the storeroom.